



S P A C E ⊕ U S A

---

S E L E C T I V E P A L L E T R A C K

W A R E H O U S E S O L U T I O N S

# S P A C E ⊕ U S A

Space Plus USA, manufactures a wide range of high-quality material handling and storage equipment.

Our products combine more than 30 years of proven engineering with the latest technology and supply chain practices.

With a manufacturing plant and distribution center strategically located in Spartanburg, South Carolina, and other facilities in the US and abroad, we can provide the solution for every storage application in the United States and the Americas.



# ⊕ SELECTIVE PALLET RACK



DECKING OPTION



TEAR DROP CONNECTION



POWDER COAT FINISH



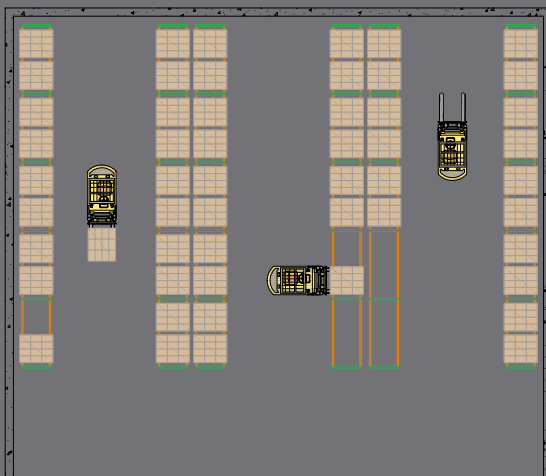
BOLTED FRAME DESIGN



BOLT-ON FOOT PLATES

# ⊕ SELECTIVE RACKING

- ⊕ In warehousing, storage capacity and accessibility are the most important factors in maximizing a facility.
- ⊕ Selective pallet racking offers the ability to access each pallet directly.
- ⊕ The design and layout can be engineered to meet any volume, weight, or size requirement.
- ⊕ Due to its versatility, selective pallet rack is the most commonly used approach in laying out warehouses.
- ⊕ Once the layout is complete deciding on the right product is the next step.
- ⊕ Space Plus USA's teardrop pallet racks, offer the solution, as the most universal style of racking, our teardrop design allows for fast installation with the strength and integrity required for each project.
- ⊕ With top quality powder coated and galvanized finish, our pallet racks make for an attractive and efficient workspace with a long life under the most challenging conditions.
- ⊕ Our teardrop design can be used as a standard selective system or incorporated into more complex applications such as Carton Flow, Drive-In, or Push Back.
- ⊕ Our components are fully compatible with most industrial storage rack systems available.





# ⊕ TEARDROP FRAMES

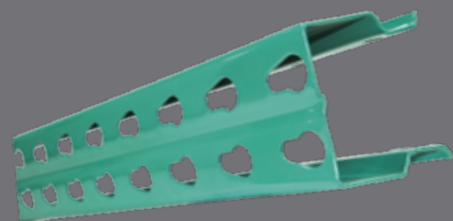


- ⊕ Frames can be assembled with standard size bracing to quickly meet various depths requests.
- ⊕ Our bolted frames ensure structural integrity while offering easy and economical repairs, allowing you to quickly replace damaged components, which welded uprights cannot match.
- ⊕ Bolted frames offer more flexibility to reconfigure, which translates to lower ownership costs.

- ⊕ Space Plus USA's Roll-Formed Frames offer great performance for different applications, they consist of two columns with the corresponding horizontal and diagonal braces and footplates.

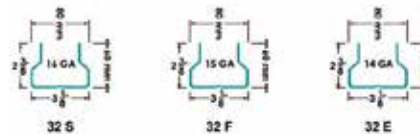
- ⊕ Columns have been designed to accommodate various steel gauges to better address capacity requirements and heights.

The teardrop pattern is punched on 2" centers giving sections a nearly custom fit for every pallet.



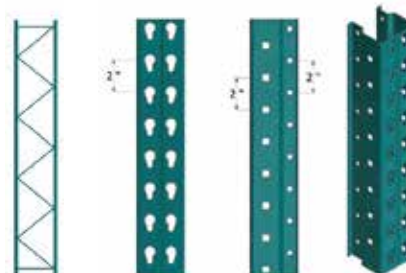
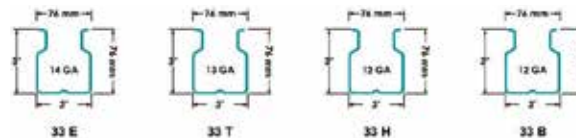
TEAR DROP UPRIGHT LOADING CAPACITY							
32 PROFILE							
BEAM SPACING		32S		32F		32E	
INCHES	MM	LBS	KGS	LBS	KGS	LBS	KGS
36	914	14,300	6,486	16,280	7,384	18,260	8,283
42	1,066	14,080	6,386	15,840	7,185	17,820	8,083
48	1,219	13,640	6,187	15,620	7,085	17,380	7,883
54	1,373	13,420	6,087	15,180	6,886	16,940	7,684
60	1,524	13,200	5,987	14,960	6,786	16,720	7,584
66	1,676	12,760	5,787	14,520	6,586	16,280	7,385
72	1,828	12,540	5,688	14,300	6,486	16,060	7,285
78	1,981	12,100	5,489	13,860	6,287	15,400	6,985
84	2,134	11,660	5,289	13,200	5,987	14,740	6,686
90	2,286	11,000	4,990	12,320	5,588	13,860	6,287
96	2,438	10,340	4,690	11,660	5,289	12,980	5,888

Beam spacing is the measurement from the floor to the top of the first beam level and then to the top of the next beam level. Use whichever beam spacing is greater for determining frame capacity. Materials meet or exceed AISI / RMI capacity and deflection requirements.



TEAR DROP UPRIGHT LOADING CAPACITY													
33 PROFILE													
BEAM SPACING		33S		33F		33E		33T		33H		33B	
INCHES	MM	LBS	KGS	LBS	KGS	LBS	KGS	LBS	KGS	LBS	KGS	LBS	KGS
36	914	17,380	7,883	19,800	8,981	22,000	9,979	26,520	12,075	29,040	13,172	31,900	14,470
42	1,066	16,940	7,684	19,360	8,782	21,560	9,780	26,180	11,875	28,380	12,873	31,240	14,170
48	1,219	16,720	7,584	18,920	8,582	21,120	9,580	25,520	11,576	27,720	12,574	30,580	13,871
54	1,373	16,280	7,385	18,480	8,382	20,680	9,380	25,080	11,376	27,280	12,374	29,920	13,571
60	1,524	15,840	7,185	18,040	8,183	20,240	9,181	24,420	11,077	26,620	12,075	29,260	13,272
66	1,676	15,620	7,085	17,600	7,983	19,800	8,981	23,980	10,877	26,180	11,875	28,600	12,973
72	1,828	15,180	6,886	17,160	7,783	19,360	8,782	23,540	10,678	25,520	11,576	28,160	12,773
78	1,981	14,740	6,686	16,720	7,584	18,700	8,482	22,660	10,278	24,420	11,077	26,840	12,174
84	2,134	14,080	6,387	16,060	7,285	17,820	8,083	21,560	9,780	23,320	10,578	25,740	11,675
90	2,286	13,200	5,987	14,960	6,786	16,720	7,584	20,240	9,180	22,000	9,979	24,200	10,977
96	2,438	12,540	5,688	14,080	6,387	15,620	7,085	18,920	8,582	20,680	9,380	22,660	10,278

Beam spacing is the measurement from the floor to the top of the first beam level and then to the top of the next beam level. Use whichever beam spacing is greater for determining frame capacity. Materials meet or exceed AISI / RMI capacity and deflection requirements.





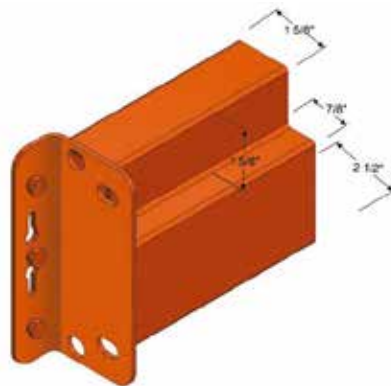
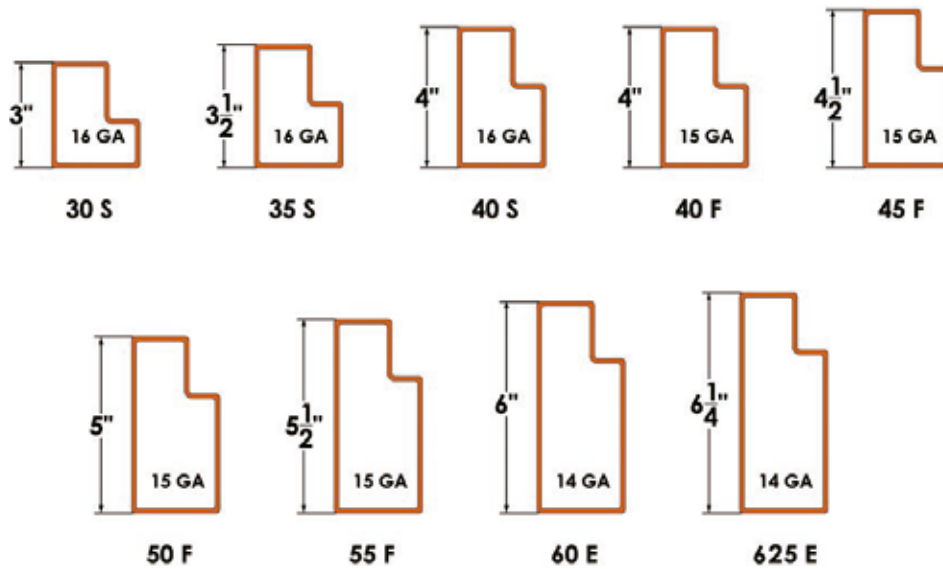
## ⊕ TEARDROP BEAMS

- ⊕ Our Rolled-Formed Teardrop beams utilize a step indentation on the inside of every beam to hold wire decking or cross bars.
- ⊕ Beams have tubular design and continuous seamless weld. Connector plates use 9-gauge steel with either 3 or 4 shaved buttons depending on the length.
- ⊕ Each beam has a pre-installed safety clip that automatically locks into place once the beam has been engaged with the frame.
- ⊕ Safety clips provide exceptional protection against any damage, tampering and accidental disengagement.



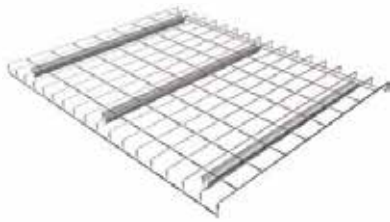
BEAM THICKNESS - CAPACITIES																			
LENGTH		30S		35S		40S		40F		45F		50F		55F		60E		625E	
INCHES	MM	LBS	KGS	LBS	KGS	LBS	KGS	LBS	KGS	LBS	KGS	LBS	KGS	LBS	KGS	LBS	KGS	LBS	KGS
48	1,219	7,100	3,221	8,900	4,038	9,900	4,492												
60	1,524	4,169	1,892	5,268	2,390	6,273	2,846												
72	1,829	3,150	1,429	4,600	2,087	6,930	3,144	8,000	3,630										
84	2,135	2,751	1,248	3,999	1,814	4,965	2,253	5,735	2,602	6,929	3,144								
96	2,438	1,773	804	2,628	1,192	4,062	1,843	5,000	2,269	5,685	2,580	7,215	3,274	9,232	4,189				
108	2,743	1,398	634	2,370	1,075	3,135	1,422	3,700	1,679	4,500	2,042	5,568	2,526	7,125	3,233				
120	3,048	1,285	583	1,678	761	2,536	1,151	3,182	1,444	3,629	1,647	4,606	2,090	5,894	2,674	8,236	3,737		
144	3,658	892	405	1,297	588	1,758	798	2,206	1,001	2,515	1,142	3,193	1,449	4,086	1,854	5,710	2,591	7,080	3,212

Beam spacing is the measurement from the floor to the top of the first beam level and then to the top of the next beam level. Use whichever beam spacing is greater for determining frame capacity. Materials meet or exceed AISI / RMI capacity and deflection requirements.



Standard Pallet Rack beams have 3 shaved buttons (pins) attached to each 6" connection plate. models 60E / 625E are equipped with 4 shaved buttons and have 8" connection plated for increased strength.

# ⊕ ACCESSORIES



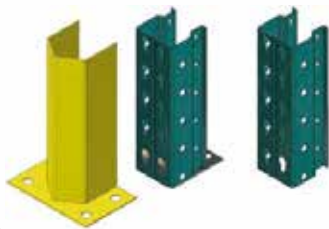
## WIRE DECKING

- ⊕ Our wire decks utilize a waterfall design that securely rests on top of each beam.
- ⊕ Provide a supportive surface for either pallets or hand loaded materials and are preferred by local fire inspectors.
- ⊕ There are no tools required for installation, wire decks just drop into place.



## CROSSBAR SUPPORTS

- ⊕ Are lightweight steel supports, designed to fit securely into step beams to provide greater pallet safety, they are also called pallet supports.



## POST PROTECTORS

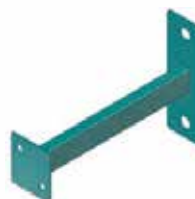
- ⊕ Are used to help preserve the strength and integrity of a pallet rack system.
- ⊕ Abuse from material handling equipment can be an all too regular occurrence within warehouses, post protectors give that extra warning before seriously risking inventory and employee safety.





### STEEL DECKING

- ⊕ Corrugate Steel Decking can be used for both storing pallets and hand-loaded materials, they can be designed with perforations to better assist fire protection.



### WALL TIES

- ⊕ Similar to Row Spacers, Wall Ties help to keep pallet rack sections straight and secure against a solid wall.
- ⊕ One side is bolted to the frame while the other against a concrete wall.



### ROW SPACERS

- ⊕ Row Spacers are designed to be used when installing pallet rack sections back to back.
- ⊕ Besides helping to keep rows straight, they provide a safety feature by creating a greater surface area of support for each section.
- ⊕ Row Spacers are simply bolted from frame to frame.



### DRUM CRADLES

- ⊕ Drum Cradles lay on top of standard step beams and can be designed for various size drums and cylinders.



195 Abbott Ln,  
Spartanburg, SC 29307

☎ 864.580.6313 - 704.905.8482

✉ [info@spaceplususa.com](mailto:info@spaceplususa.com)

[www.spaceplususa.com](http://www.spaceplususa.com)

W A R E H O U S E   S O L U T I O N S